



GUNNERSBURY
PARK & MUSEUM



Activity Trail

WILDFLOWER MEADOW





This activity is designed for the area within the dotted oval, but will work in any other meadow space too.

Welcome to Gunnersbury Park's Wildflower Meadow

Forget your typical lawn!

The meadow is cut just once a year at the end of the summer and all kinds of plants are allowed to grow as they would in the wild.

Growing a wildflower meadow helps
loads of animals including...

Hedgehogs

Insects

Frogs

Bats

Moths

Bees

Dragonflies

Butterflies

Small mammals

Newts

Birds

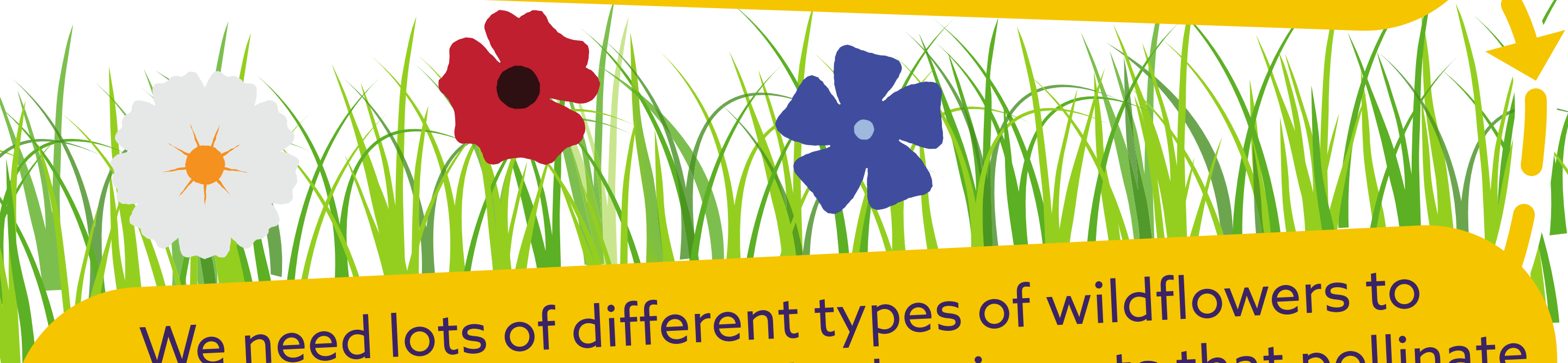
Damselflies

Lizards

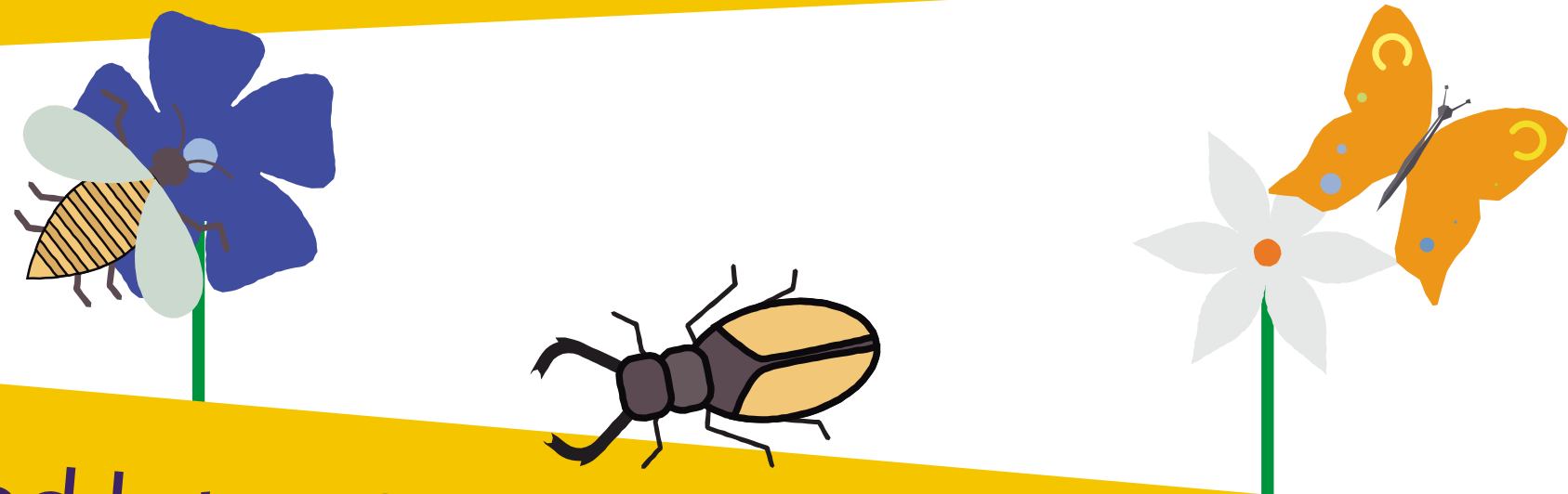


DID YOU KNOW?
OVER 97% OF THE UK'S
WILDFLOWER MEADOWS HAVE
BEEN LOST SINCE THE 1930S

Wildflower meadows provide a habitat (or home) for all kinds of insects, helping to make sure they're around in the future as well as today.



We need lots of different types of wildflowers to provide bees, butterflies and other insects that pollinate plants with food like leaves, nectar and pollen.



And we need lots of pollinators to help us to grow fruits and vegetables. Without them, we'd struggle to put any food on our plates for dinner!



The insects themselves are tasty food for birds, bats and small mammals, helping to keep the whole ecosystem healthy and working properly.



Eyes at the ready

How many different kinds of birds and insects can you spot in the meadow?

How many different kinds of wildflower can you spot in the meadow?

A Symphony of Sounds

With so many animals living in and around them, meadows can be one noisy neighbourhood!

60 second challenge



Listen carefully for a minute, concentrating on the sounds in the meadow. What do you hear?

Make a note of any buzzes or birdcalls in your notebook, or even by making a recording on a phone so you can listen again when you're back at home.

Are the sounds **high-pitched** or **low-pitched**?

Are they *fast* or *slow*?

Are they *melodic* (like a bird singing a tune) or **RHYTHMIC** (like the buzz of a bee)?

Are they pleasant to listen to, or a bit **SCARY**?

Back at home, we'll think more about these sounds and how they might even help shape a great piece of music.

Where next?



BACK AT HOME

Test your wildflower knowledge in our quiz, find out how nature has inspired composers, and create your own piece of music.

Go to visitgunnersbury.org/back-at-home



MORE ACTIVITIES!

There are plenty more activities to try while you're still in the park, from making your own land art to choreographing a dance.

Go to visitgunnersbury.org/activity-trail and follow the map.



WANT TO EXPLORE MORE?

There are other family trails to help explore the amazing history of Gunnersbury Park, including the Lost Tennis Court and Princess Amelia's Bath House.

Go to visitgunnersbury.org to download them.